

## Rectangular trays cavities

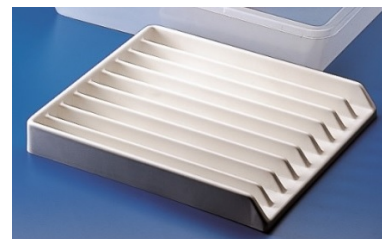
### 9 cavity

The hollow PVC trays can contain bottles with a base diameter not exceeding 22 mm.

They are ideal for holding 7 ml bottles in each of the 9 compartments; 12 bottles can also be housed for a total of 126 pieces.

The PVC trays with compartments are very useful for storing small items to keep in the drawer.

The central compartment of the 5-cavity tray can be used to store serological pipettes



Code	Description	No. Cavity	Dim Cavity mm	Internal dimensions mm	External dimensions mm
03100952	Rectangular trays cavities	9	25X355	300x355x42	350x300x40