

Mixed Cellulose Esters (MCE) filter membranes diam.mm 47 por. um 0,8 white

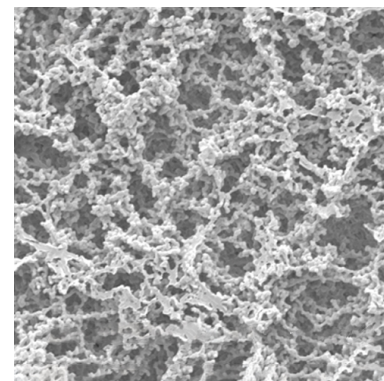
MCE filter membranes are typically used for:

- Aqueous filtration
- Sterility test
- Gravimetric analysis with the incineration technique
- Microbiological and particulate analysis
- applications on food and beverages (black color)

High flow rate: Ensures fast filtration rates

Uniform porous structure: Guarantees constant flow rate and diffusion rates

<4% extractable: Leads to smoother results



Mixed Cellulose Esters (MCE) filtration membrane is an unsupported hydrophilic membrane.

Its fast flow rate and high productivity make it ideal for use in bacterial load and sterility testing.

The white cross-linked discs are designed for the recovery and retention of E. coli bacteria in water, wastewater and other microbiological testing. Filters are certified to meet the specifications listed in the APHA standard methods. Also ideal for sterility and bacterial load tests in QC / QA laboratories.

MCE black filters are specially manufactured and tested for quality assurance testing in food and beverage analysis. Without proper microbiological testing, the taste, smell and appearance of the final product can be ruined, resulting in loss of production time, expensive in-line cleaning and loss of the final product due to spoilage. Black filters provide excellent contrast for early and accurate colony counting for total bacteria, yeast and mold organisms. Filters are certified to meet the specifications listed in the APHA standard methods.

Continuous Form: Provide the user with the same quality and reliability as individually packaged MCE membranes. They offer hands-free convenience, reduce lab time, and increase lab efficiency. The rolls are designed for use with the most popular membrane dispensers.

ON REQUEST: Automatic dispenser for sterile membranes in continuous form

| Code | Description | Diam.mm | Porosity µm | Color | Lattice | Sterile in single pack | Pieces per pack. |
|----------|--|---------|-------------|-------|---------|------------------------|------------------|
| 63470081 | Mixed Cellulose Esters (MCE) filter membranes diam.mm 47 por. um 0,8 | 47 | 0,8 | white | no | no | 100 |

| Code | Description | Diam.mm | Porosity μm | Color | Lattice | Sterile in single pack | Pieces per pack. |
|------|-------------|---------|------------------------|-------|---------|------------------------|------------------|
| | white | | | | | | |